



Micro Projector

User's Guide for Model PJ809B v2248-01

For the most up-to-date version of this User's Guide, go to www.gpx.com

Safety Instructions & Warnings

- Read these Instructions.
- Keep these Instructions.
- Heed all Warnings.
- Follow all instructions.
- Do not use this apparatus near water.
- Clean only with a dry cloth.
- Do not block any ventilation openings. Install in accordance with the manufacturer's instructions.
- Do not install near any heat sources such as radiators, heat registers, stoves, or other apparatus (including amplifiers) that produce heat.
- Do not defeat the safety purpose of the polarized or grounding - type plug. A polarized plug has two blades with one wider than the other. A grounding type plug has two blades and a third grounding prong. The wide blade or the third prong are provided for your safety. When the provided plug does not fit into your outlet, consult an electrician for replacement of the obsolete outlet.
- Protect the power cord from being walked on or pinched particularly at plugs, convenience receptacles, and the point where they exit from the apparatus.
- Only use attachments/accessories specified by the manufacturer.
- Unplug this apparatus during lightning storms or when unused for long periods of time.
- Refer all servicing to qualified service personnel. Servicing is required when the apparatus has been damaged in any way, such as power-supply cord or plug is damaged, liquid has been spilled or objects have fallen into the apparatus, the apparatus

has been exposed to rain or moisture, does not operate normally, or has been dropped.

- Use only with a cart, stand, tripod, bracket, or table specified by the manufacturer, or sold with the apparatus. When a cart is used, use caution when moving the cart/apparatus combination to avoid injury from tip-over.



FCC WARNINGS

WARNING: Changes or modifications to this unit not expressly approved by the party responsible for compliance could void the user's authority to operate the equipment.

NOTE: This equipment has been tested and found to comply with the limits for a Class B digital device, pursuant to Part 15 of the FCC Rules. These limits are designed to provide reasonable protection against harmful interference in a residential installation.

This equipment generates, uses, and can radiate radio frequency energy and, if not installed and used in accordance with the instructions, may cause harmful interference to radio communications. However, there is no guarantee that interference will not occur in a particular installation. If this equipment does cause harmful interference to radio or television reception, which can be determined by turning the equipment off and on, the user is encouraged to try to correct the interference by one or more of the following measures:

- Reorient or relocate the receiving antenna.
- Increase the separation between the equipment and receiver.
- Connect the equipment into an outlet on a circuit different from that to which the

receiver is connected.

- Consult the dealer or an experienced radio/TV technician for help.

BATTERY WARNINGS

- **WARNING:** Do not ingest battery, Chemical Burn Hazard.
- If the remote control supplied with this product contains a coin/button cell battery and the coin/button cell battery is swallowed, it can cause severe internal burns in just 2 hours and can lead to death.
- Keep new and used batteries away from children. If the battery compartment does not close securely, stop using the product and keep it away from children.
- If you think batteries might have been swallowed or placed inside any part of the body, seek immediate medical attention.
- **CAUTION:** Danger of explosion if battery is incorrectly replaced. Replace only with the same or equivalent type.
- **WARNING:** There is a danger of explosion if you attempt to charge standard Alkaline batteries in the unit. Only use rechargeable NiMH batteries.
- Battery shall not be exposed to excessive heat such as sunshine, fire, or the like.
- Do not mix old and new batteries.
- Completely replace all old batteries with new ones.
- Do not mix alkaline, standard (carbon-zinc), or rechargeable (ni-cad, ni-mh, etc) batteries.
- Batteries should be recycled or disposed of as per state and local guidelines.

ADDITIONAL WARNINGS AND PRECAUTIONS

- Do not look directly into the projector light.
- Use in well ventilated area with ambient temperature between 41°F~104°C (5°C~40°C).
- Do not block any ventilation openings.
- To prevent risk of overheating, place the projector in an area that does not block ventilation, such as an enclosure or cabinet that might restrict airflow.
- Do not place the projector on an unstable surface, such as a loose stack of books, bed, or cushion.
- Do not cover the projector with a blanket, curtain, or similar.
- If setting up near a wall, leave at least 10 in. (25cm) between the wall and the projector's ventilation ports.
- Use a power outlet that can be easily accessed and unplugged.
- Do not block the light coming out of the lens. The light will heat the object and may cause burns, cause it to melt or catch fire.
- When powering off the projector, allow the cooling cycle to finish before handling or disconnecting the power supply.
- Do not use the projector if it has been damaged. Damage could be (but not limited to):
 - Unit has been dropped or something has been dropped on it or into it.
 - Something is loose or rattling inside the unit.
 - Projector has been exposed to rain or liquid.

- Power supply or power cord is damaged.
- Do not use the projector in places where flammable gases or explosives may be present.
- Do not use the projector in the following conditions:
 - Extremely hot, cold, or humid environments
 - Environments with excessive amounts of dust and dirt in the atmosphere.
 - Near appliances generating a strong electromagnetic field or heat.
 - In direct sunlight.
- If the air vents become clogged or dirty, use a vacuum or air compressor and nozzle to clean. Do not use canned air, as the gas may leave a residue inside the enclosure.
- CAUTION: TO PREVENT ELECTRIC SHOCK, MATCH WIDE BLADE OF PLUG TO WIDE SLOT, FULLY INSERT.
- Mains plug is used as disconnect device and it should remain readily operable during intended use. In order to disconnect the apparatus from the mains completely, the mains plug should be disconnected from the mains socket outlet completely.
- CAUTION: Use of controls or adjustments or performance of procedures other than those specified may result in hazardous radiation exposure.
- WARNING: Changes or modifications to this unit not expressly approved by the party responsible for compliance could void the user's authority to operate the equipment.
- WARNING: Use of this unit near fluorescent lighting may cause interference regarding use of the remote. If the unit is displaying erratic behavior move away from any fluorescent lighting, as it may be the cause.
- WARNING: Shock hazard - Do Not Open.
- Caution and marking information is located at the rear or bottom of the apparatus.
- WARNING: To reduce the risk of fire or electric shock, do not expose this apparatus to rain, moisture, dripping, or splashing.
- Objects filled with liquids, such as vases, shall not be placed on the apparatus.
- Do not place any objects, heavy or otherwise, on the projector.
- This product meets and complies with all Federal regulations.
- See projector enclosure for related safety markings.
- No user serviceable parts inside, do not attempt to open the unit or perform any repair. Doing so may cause damage or injury, and will void your warranty.
- Refer all repairs or replacement to qualified service personnel.
- Stop using the projector and unplug the power source immediately if you notice the following:
 - Smoke coming from the unit or power supply.
 - Strange odors or noises coming from the unit.
 - Liquid or foreign objects have gotten inside the unit.
 - Unit has been dropped and enclosure has been damaged.



WARNING: To reduce the risk of electric shock, do not remove cover (or back). No user-serviceable parts inside. Refer servicing to qualified

service personnel.



The exclamation point within an equilateral triangle is intended to alert the user to the presence of important operating and maintenance (servicing)

instructions in the literature accompanying the appliance.



The lightning flash with arrowhead symbol, within an equilateral triangle, is intended to alert the user to the presence of un-insulated “dangerous

voltage” within the product’s enclosure that may be of sufficient magnitude to constitute a risk of electric shock to persons.



This symbol indicates that this product incorporates double insulation between hazardous mains voltage and user accessible parts.



WARNING : This product can expose you to chemicals including lead, which is known to the State of California to cause cancer and birth defects or other

reproductive harm. For more information go to www.P65Warnings.ca.gov.

Table of Contents

Safety Instructions & Warnings

– 2

Overview

Features – 7

Includes – 7

Front View – 8

Rear View – 9

Remote – 10

Remote Batteries – 11

Setup

Charging the Battery – 12

Power – 12

Tripod Attachment – 13

Projector Placement – 14

Connecting to a Wi-Fi Network – 15

Main Menu – 16

Setup Screen – 17

Connecting to Other Devices

Connecting via Miracast – 18

Connecting via iOS Cast – 19

Devices with an HDMI Output – 20

USB Drive – 22

Audio Output – 24

Troubleshooting – 26

Customer Support – 28

Contact Information

Warranty

International Support

Overview

Features

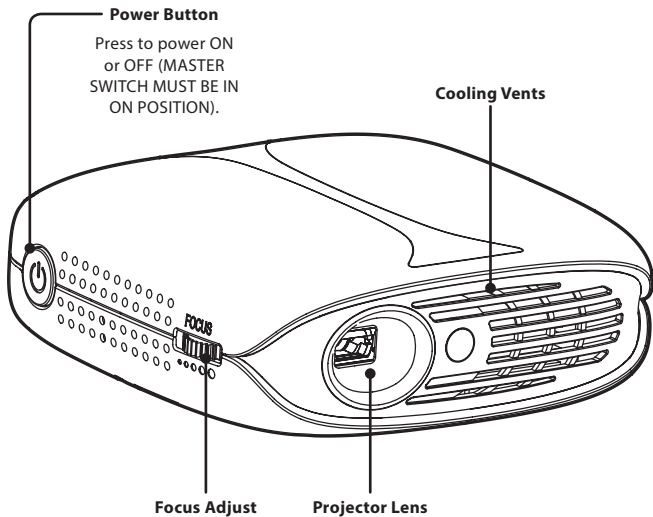
- DLP projector
- Supports 480p, 720p, 1080i, 1080p
- Native Resolution: 854 x 480
- Brightness: 1200 lumens
- 3D display mode
- HDMI input
- USB port for media play
- Audio Output
- Up to 120" viewable screen size
- Built-in speaker
- Rechargeable battery: 5200 mAh with approx. 80 minutes run time

Includes

- Tripod
- Remote Control
- HDMI Cable
- USB charging cable
- AC/DC power adapter

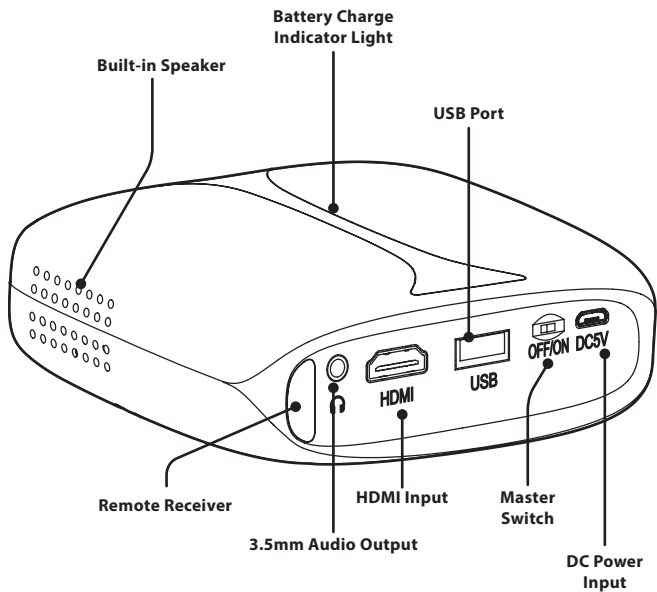
Overview

Front View



Take care not to block any cooling ventilation.

Rear View

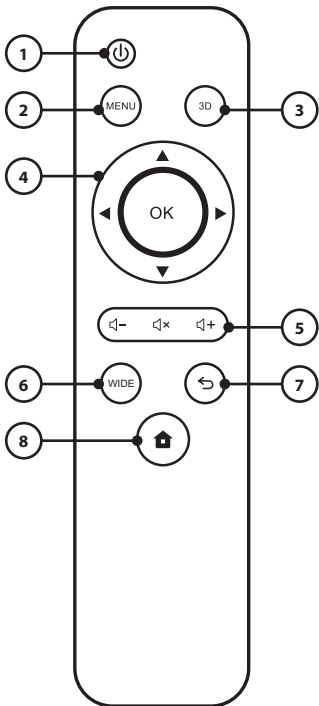


Overview

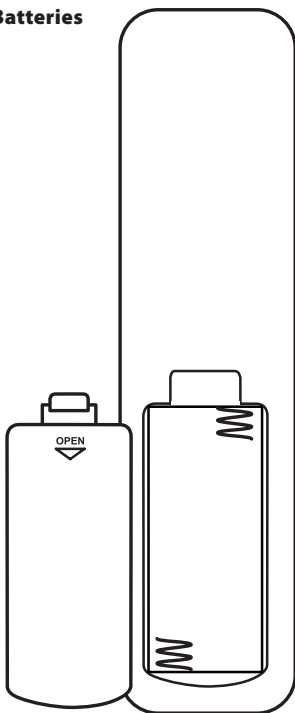
Remote

Use the remote to make menu selections and adjust settings. Be sure to aim at the forward or rear facing remote receiver on the projector.

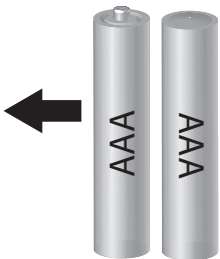
1. **Power ON/OFF**
2. **Menu:** Press to access play controls and menus in different play modes and apps.
3. **3D:** 3D view (HDMI and USB only).
4. **Arrows/OK:** Use to make selections and play media.
5. **Volume Down/Mute/Volume Up**
6. **Wide:** Adjust aspect ratio angles (HDMI and USB only).
7. **Exit/Return:** Press to go back one step in projector menus.
8. **Main Menu:** Press to access the main projector menu.



Remote Batteries



Requires 2 AAA batteries
(not included)



Setup

Charging the Battery

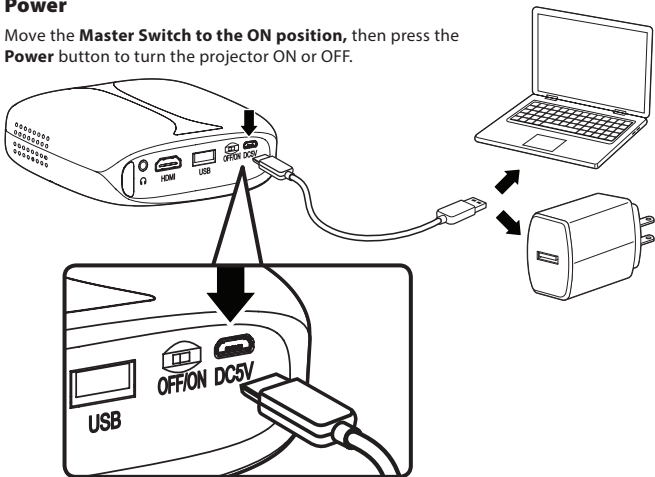
Using a Micro-USB to USB cable (included), connect the DC IN (Micro-USB power input) on the projector to a USB port on a powered on computer or USB charging adapter (included).

When the Master Switch is in the OFF position, the Battery Indicator Light will display a blue light while charging, and turn off when the battery is fully charged.

When the Master Switch is in the ON position and the unit is powered ON, the battery icon on the top right corner of the screen will display the battery charge level.

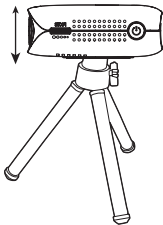
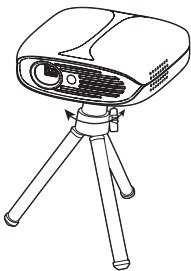
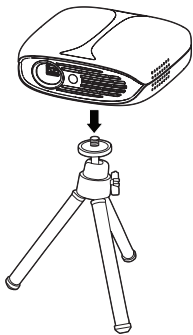
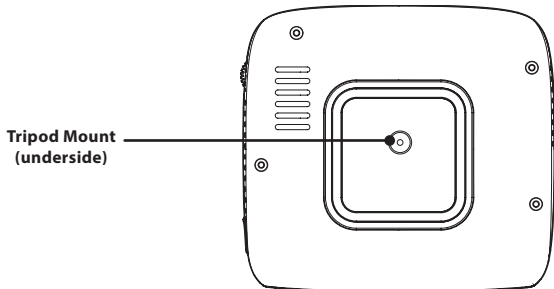
Power

Move the **Master Switch to the ON position**, then press the **Power** button to turn the projector ON or OFF.



Tripod Attachment

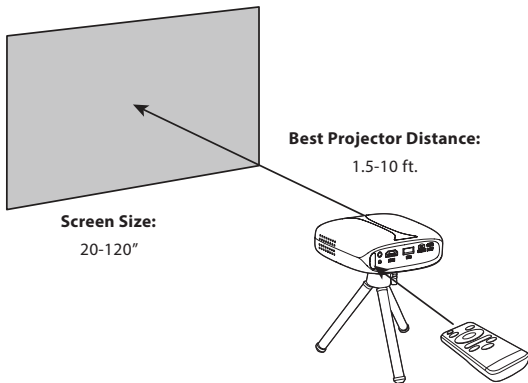
Tripod included (1/4" thread diameter).



Setup

Projector Placement

- For best results, place the projector in a dark room or other dimly lit area with a dedicated projector screen.
- If placing the projector behind the viewing screen (projector facing toward the viewers), a special rear projection screen will be required.
- Screens are not included with the projector.
- If you are not using the unit with a screen, a smooth, white or lightly colored surface will provide the best results.
- Place the projector in an area with ample airflow for the cooling vents. Do not block or otherwise obscure any of the vents. Do not place the projector on a cushion that might block the vents on the bottom of the projector.



Connecting to a Wi-Fi Network

- From the **Main Menu**, choose **Setup**.
- Under the **Network Menu**, select **Wi-Fi > Scan**.
- Select your Wi-Fi network from the list and enter your password using the remote. When finished entering your password, press the **Return** button on the remote to exit the keyboard, then press **Confirm**.



Setup

Main Menu

- Media: View files on a connected USB drive.
- HDMI: Play media from a connected HDMI media source.
- Miracast/iOS Cast: Play media from a connected Android or Apple device. *Note: Netflix is not currently compatible with iOS Cast/Screen Mirroring on Apple devices.*
- Koala/YouTube: Play media through one of these apps.
- Setup: Connect to Wi-Fi, adjust device settings, and update or reset the projector.



Setup Screen

- Network: Wi-Fi Scan/Auto IP/Static IP
- Projection: Brightness Mode/Mounting Mode/Automatic Trapezoid/Keystone Correction
- Advanced: Language/Boot Source. Local Update/ Online Update. Restore Factory
- Information: View projector information and software version IDs



Connecting to Other Devices

Connecting via Miracast

To use screen casting with the projector, it must first be connected to a Wi-Fi network.

- From the **Main Menu**, select **Miracast**.
- Open the screen casting display function of the Android device you wish to connect. *Note: This may be listed under different names depending on the particular Android device. For example, Miracast, SmartView, Vistacast.*
- Select the projector from the list of available devices. The projector will display the image from your Android device when successfully connected.



The diagram is titled "Miracast" and explains the connection process. It shows a projector on the left and a mobile device (either a tablet labeled "Pad" or a smartphone labeled "Mobile") on the right. A Wi-Fi signal icon is positioned between them, indicating the connection method. The entire setup is enclosed in a dashed-line box.

Miracast

To connect Android Mobile/Pad Device with Projector Based on WiFi-Display Technology

1. On your Android Mobile/Pad, open the settings menu.
2. Access your display settings or screen-mirroring.
3. Select your Miracast receiver: PJ809-xxx(mcast).

Connecting via iOS Cast

To use screen casting with the projector, it must first be connected to a Wi-Fi network.

Note: Not all media apps or streaming services support screen casting via Apple devices.

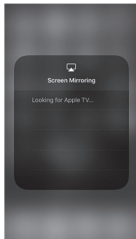
- Select iOS Cast from the Main Menu. *Note: iOS devices and the projector must be connected to the same network.*
- Open the **Control Center** of the iOS device and select **Screen Mirroring**.
- Select the projector from the list of available devices. The projector will display the image from your Apple device when successfully connected.

Mirror your iPhone, iPad or iPod touch

Make sure that your iOS device is connected to the same network as your projector, or connect iOS device with AP by Projector: Projector AP-xxxx



1. On your iOS device, open Control Center and tap Screen Mirroring.



2. Looking for devices that can be mirrored on.



3. Select PJ809-xxxx(icast) from the list.

Connecting to Other Devices

Devices with an HDMI Output

Requires an HDMI cable (included) and a device with an HDMI output.

- Using an HDMI cable, connect the **HDMI input** on the projector to the **HDMI output** on a compatible media player.
- From the **Main Menu**, select **HDMI**. *Note: If connecting to a PC, it may help to change the display resolution to 1024x768.*

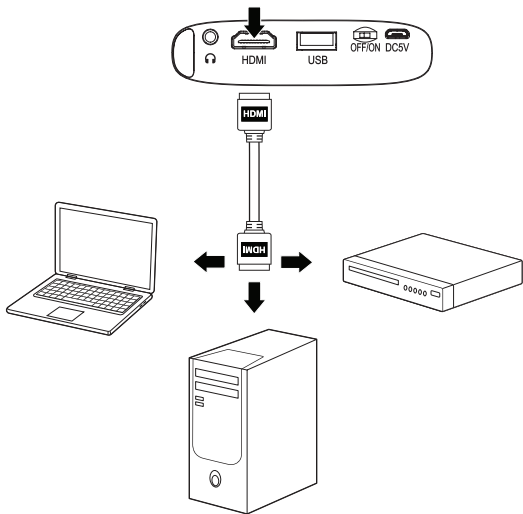


Image from HDMI source will be seen here.

^
Image Mode

Aspect Ratio

3D Mode

Brightness

Contrast

Color

v



Image



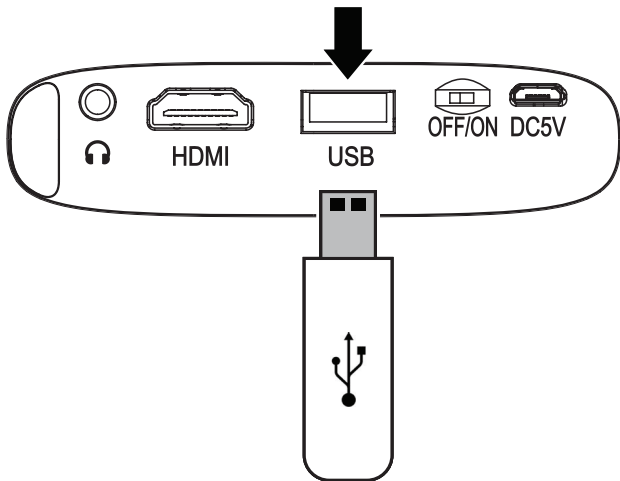
Sound

Press the **Menu** button on the remote to access the above options during HDMI play.

Connecting to Other Devices

USB Drive

- Connect a USB drive to the USB port on the rear of the unit.
- From the **Main Menu**, select **Media**, then select **Movie, Music, or Photo**, depending on the type of media on the USB drive.
- Use the remote to select and begin playing files. Press **Menu** to access on-screen play controls and options.



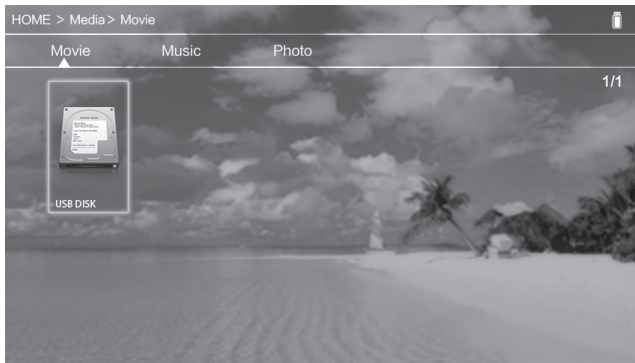


Image Format	JPG, JPEG, BMP, PNG
Audio Format	MP3, WMA, MP2, OGG, M4A, MA4, FLAC, 3GP, WAV, M3U, RM, WMV
Video Format	MP4, MOV, 3GP, AVI, FLV, ISO, M2TS, MKV, MPG, RMVB, TP, TRP, TS, MWV, VOB, DAT, ASF.H.265

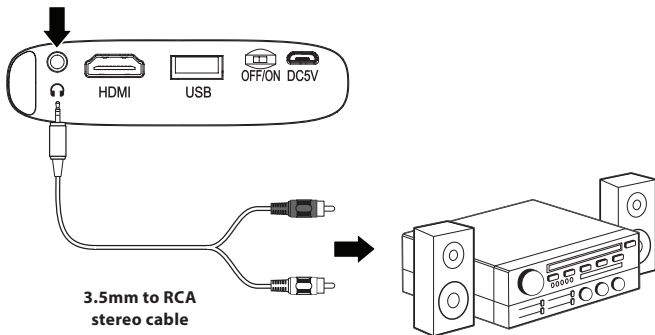
Connecting to Other Devices

Audio Output

Note: External speakers must have their own power supply.

Requires a 3.5 mm to RCA stereo cable or 3.5mm audio cable (not included).

- Using the appropriate audio cable, connect the **Audio Out** on the projector to external powered speakers or headphones. The projector will automatically detect the connection and send audio through the output.

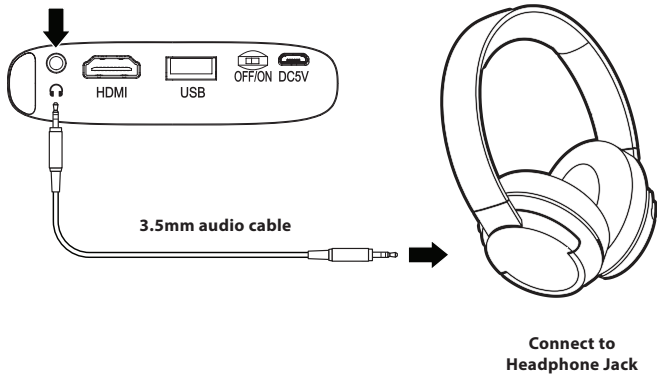


Connect to amplifier

Audio Left Channel - White

Audio Right Channel - Red

To avoid hearing damage, be sure the volume on the projector is turned down before connecting headphones, then gradually increase the volume to a comfortable level.



Troubleshooting

Image is Blurry

- Turn the Focus Adjustment wheel left or right to bring the image into focus.
- Be sure the surface you are projecting onto is smooth and non-reflective.
- Be sure the projector lens is not obscured, dirty, or scratched.

Image is Misaligned

- Be sure the projector is parallel with the surface on which you are projecting.
- Be sure the surface you are projecting onto is flat.
- Adjust screen settings in the Setup Menu.

No Sound

- Be sure the volume on the projector is turned up to a sufficient level.
- Be sure the volume on your connected device is turned up to a sufficient level.
- Be sure the HDMI cable is fully connected to the HDMI ports on the projector and your device.
- If using an adapter, be sure the adapter supports audio and the plugs are fully connected.

Projector Will Not Power On or Stay Powered On

- If using the internal battery only, be sure the battery is sufficiently charged.
- If using the power cable and external power source, be sure the cables are securely plugged into their sockets and ports, and the external power supply is powered on.
- If using a computer for power, be sure the computer is powered on and/or the USB ports will function while the computer is in sleep mode.
- Be sure the power source is functioning properly, or try another power source.

"No Signal" Message

- Be sure you are connecting to an HDMI output on your device.
- Be sure the HDMI cable is firmly connected to the HDMI ports on both the projector and the connected device.
- If connecting to a computer, check the display settings. Be sure the computer is set to display to other devices ("mirror display, duplicate display," or similar).

Customer Support

Contact Information

Website: www.gpx.com

Email Support: prodinfo@dpiinc.com

Email Parts: partsinfo@dpiinc.com

Phone Support: 1-888-999-4215

Warranty

For Warranty Information and the most up-to-date version of this User's Guide, go to: www.gpx.com



*Protect for Today
Sustain for Tomorrow*

International Support

To download this User's Guide in English, Spanish, and French, or to get answers to frequently asked questions, visit the support section at:

www.gpx.com

Para descargar este Manual del Usuario en inglés, español y francés, o para obtener respuestas a preguntas frecuentes, visite la sección de apoyo en: www.gpx.com

Pour télécharger ce guide de l'utilisateur en anglais, espagnol ou français, ou pour obtenir des réponses à des questions fréquemment posées, consultez la rubrique d'assistance sur: www.gpx.com

Copyright © 2019 Digital Products International (DPI, Inc.) All other trademarks appearing herein are the property of their respective owners. Specifications are subject to change without notice.